

Desde la sostenibilidad hacia el biodiseño

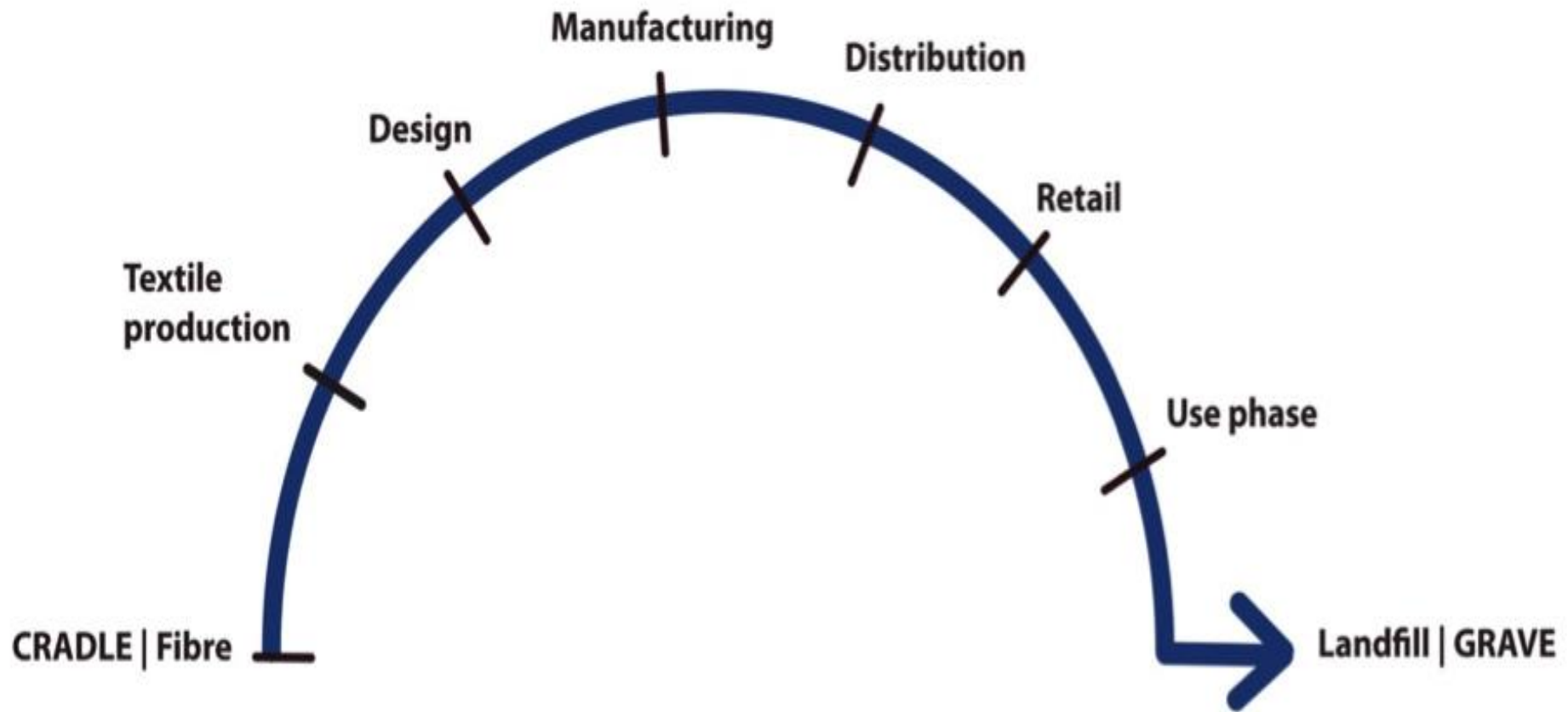
<https://www.carolinaobregon.com/>



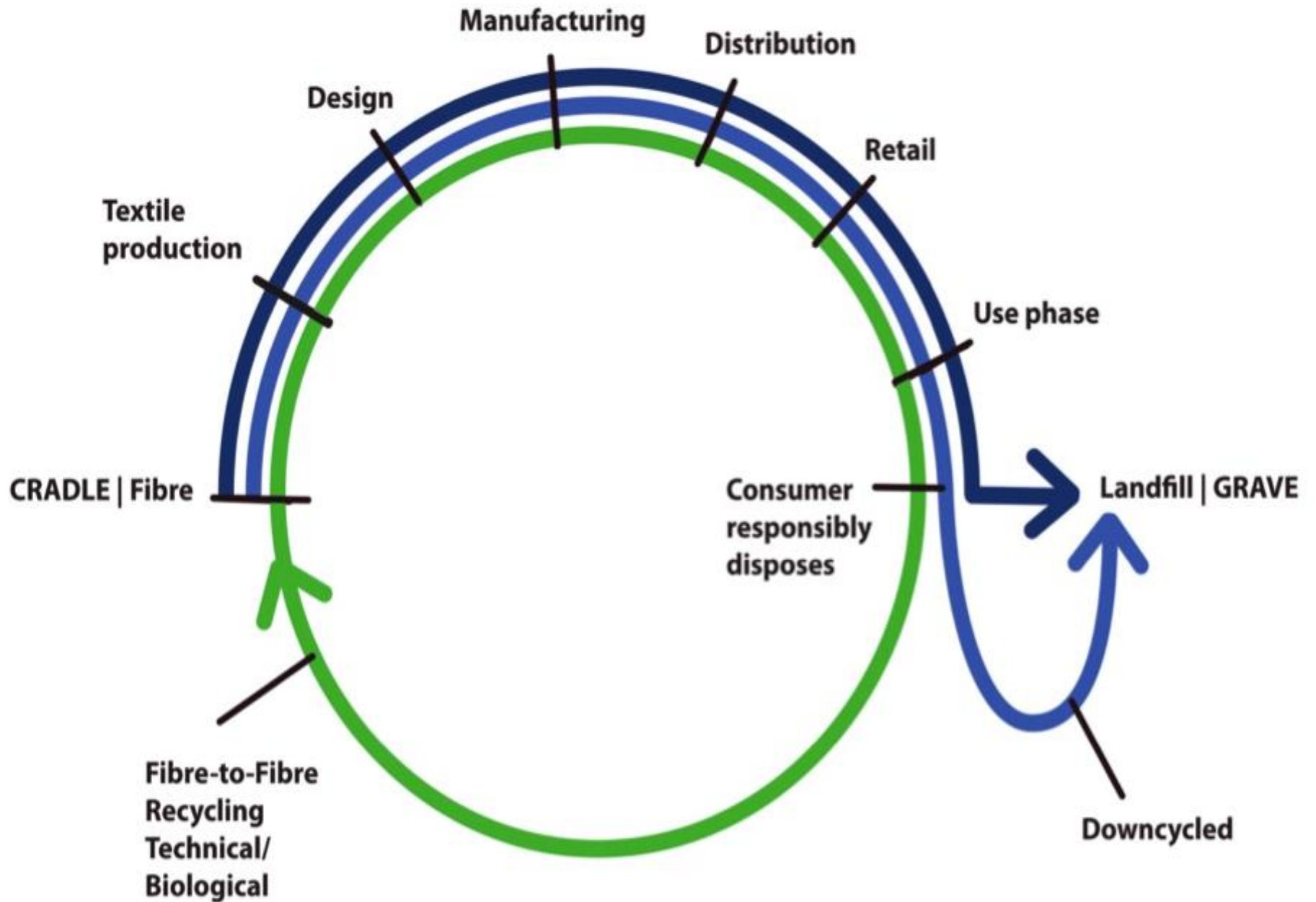
carro.obregon

THE NEW SCHOOL

PARSONS



Source: Payne, Alice. (2011). Frantic fashion and Australia's invisible designers : conversations on sustainability in the mass market.



b d c



STELLA McCARTNEY



Stray Dog Capital

PETA

PETA & Stella McCartney BioDesign Challenge Winners Create Animal Free Wool



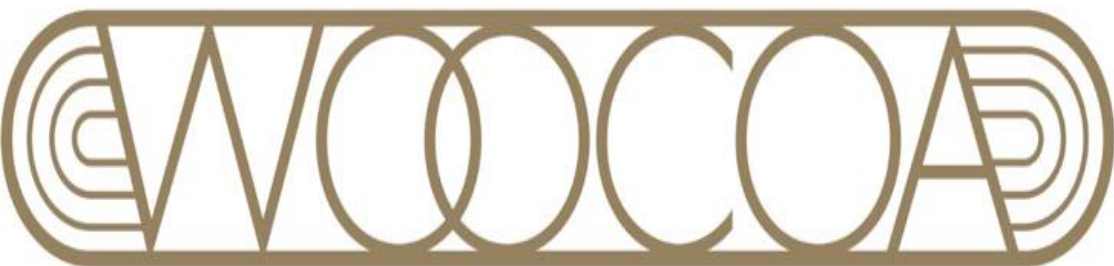
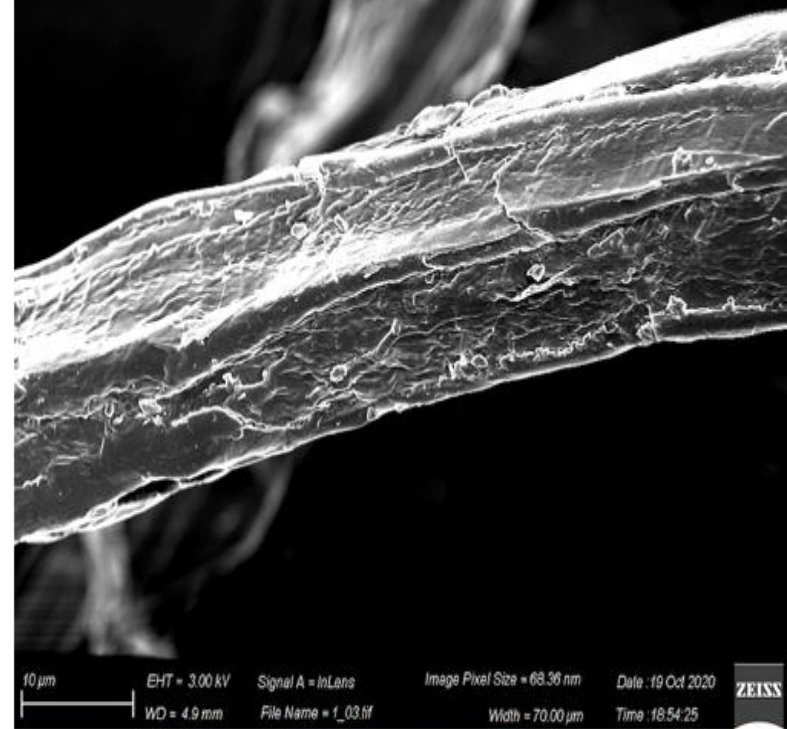
Western Bonime Contributor © (+)

Arts



"We aim to prove that it is possible to create luxurious products without causing unnecessary harm to the planet"~ Stella McCartney Website



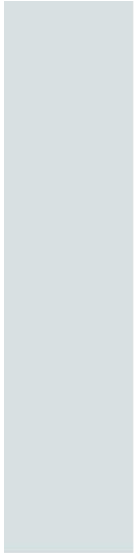


*Source: Manuel Ortiz, Carolina Obregón, Moises Hernández



PSEUDOFREEZE

"It's all about proteins"



©Loop
©Universidad de los Andes

Ana Bejarano Olano
María Camacho Herrera
Juliana Franco Vivas
Nicole Hakim De la Torre

Rector de la Universidad de los Andes
Alejandro Gaviria Uribe

Decano Facultad de Arquitectura y Diseño
Rafael Hernando Barragán Romero

BioModa
Profesoras
Carolina Obregón Tarazona
Giovanna Daniel Turano

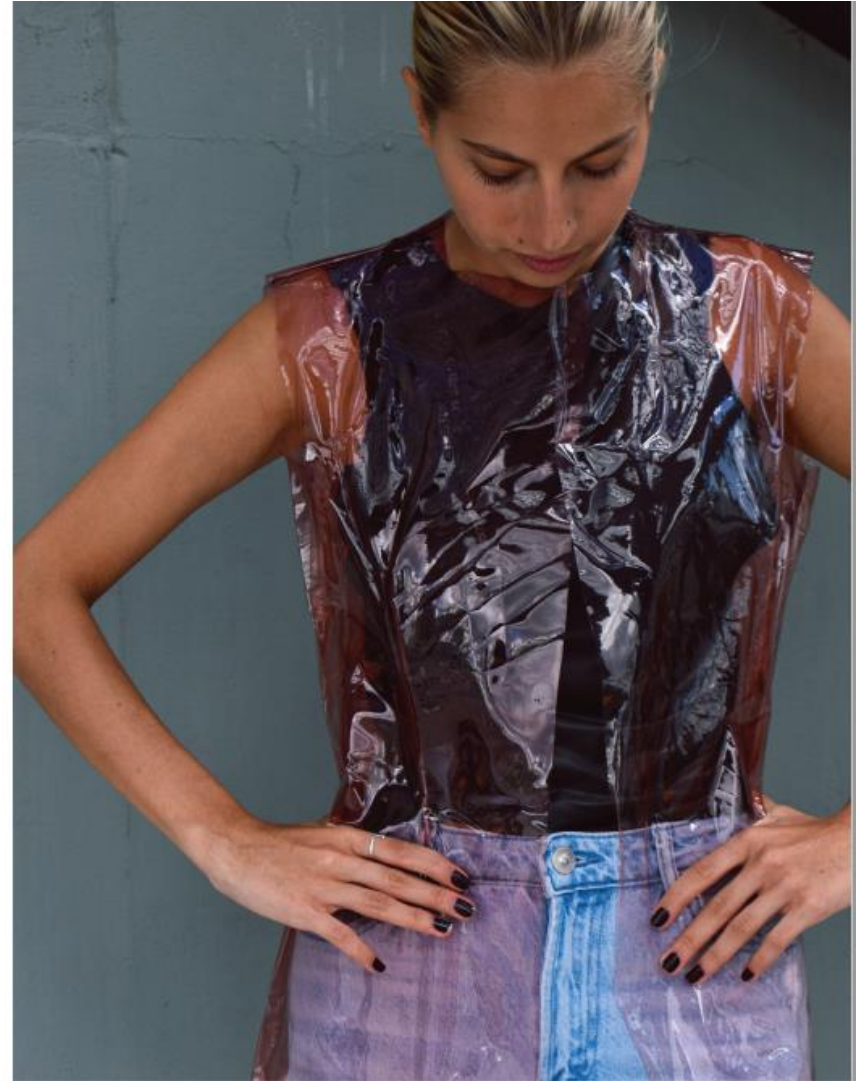
Fotografía
Juliana Franco Vivas

Modelo
Nicole Hakim De la Torre

Styling
Ana Bejarano Olano
María Camacho Herrera
Juliana Franco Vivas
Nicole Hakim De la Torre

Diagramación
María Camacho Herrera

Texto
Ana Bejarano Olano
María Camacho Herrera
Juliana Franco Vivas



CHALECO

ENSAMBLES MODULARES

Coligeno360gr
Glicerina180 gr
Agua1800ml
Carbón Activado60gr

Esta prenda tardó 90 horas en hacerse. Desde el desarrollo de su material hasta la confección de la misma.

Prenda apta para descomponer en casa



- Source: Juliana Franco + Ana Bejarano + Nicole Hakim + María Camacho



• Source: Juliana Franco + Ana Bejarano + Nicole Hakim + María Camacho



CROP TOP

LENTEJUELA DE BIOPLÁSTICO

Colágeno	120gr
Glicerina	72 gr
Agua	600ml
Carbón Activado	60gr

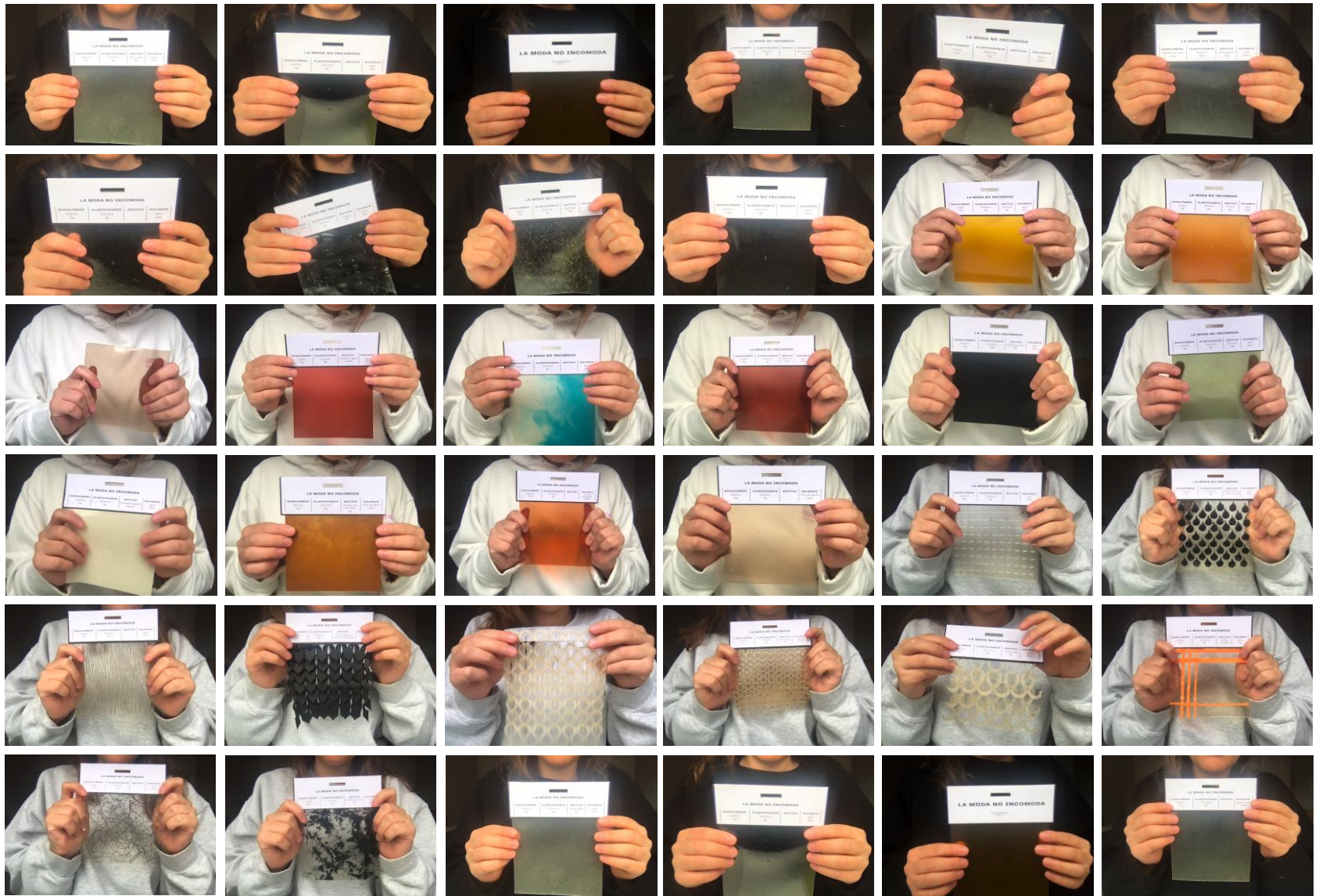
Esta prenda tardó 114 horas en hacerse. Desde el desarrollo de su material hasta la confección de la misma.

Prenda retornable

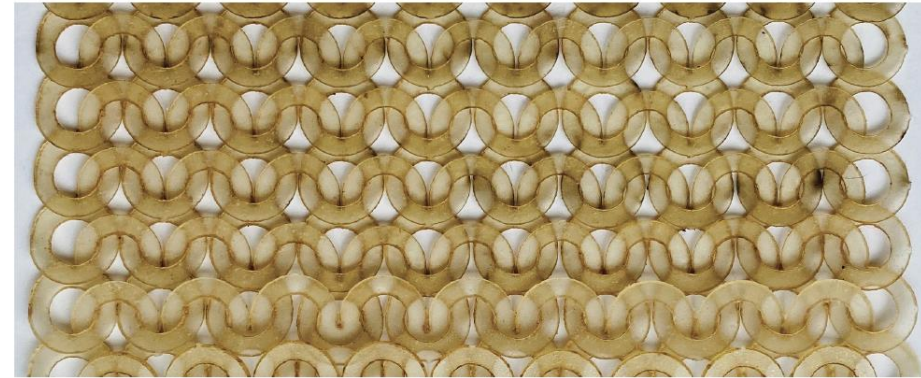
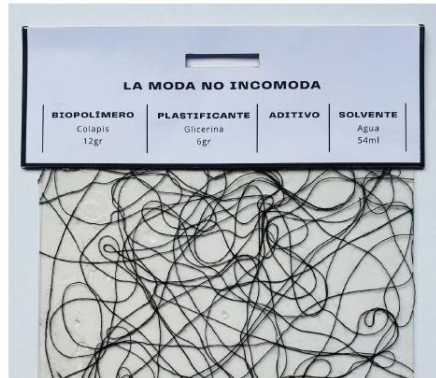
- Source: Juliana Franco + Ana Bejarano + Nicole Hakim + María Camacho

LA MODA NO INCOMODA

ANA BEJARANO



Ana Bejarano

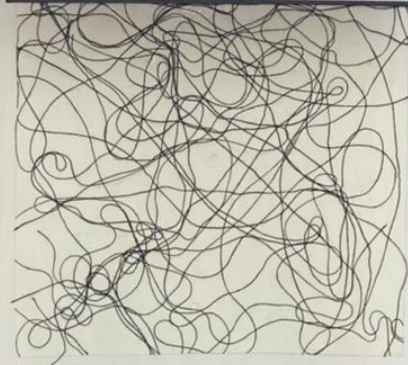


ANA BEJARANO
2021_1



LA MODA NO INCOMODA

ANA BEJARANO
2021_1



LA MODA NO INCOMODA

BIOPOLIMERO	PLASTIFICANTE	ADITIVO	SOLVENTE
Gelatina 6gr	Glicerina 6gr	Fécula papa 6 gr Carbón activado 6gr	Agua 60ml



LA MODA NO INCOMODA

ANA BEJARANO
2021_1



LA MODA NO INCOMODA

BIOPOLIMERO	PLASTIFICANTE	ADITIVO	SOLVENTE
Gelatina 15gr	Glicerina 6gr	Tinte de repollo	Agua 100ml



LA MODA NO INCOMODA

BIOPOLIMERO	PLASTIFICANTE	ADITIVO	SOLVENTE
Colaplis 15gr	Glicerina 6gr	Carbón activado 10gr	Agua 100ml



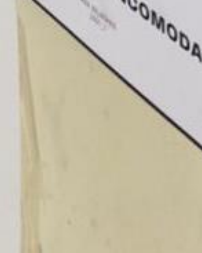
LA MODA NO INCOMODA

ANA BEJARANO
2021_1



LA MODA NO INCOMODA

ANA BEJARANO
2021_1



E-DYE

BY
SAMKELO
ALL STAR



RENEW
LABS STORE



THE GARBAGE PATCH
LOCATION: 10 10 10 10
OPENING HOURS 24/7

RENEW LABS STORE

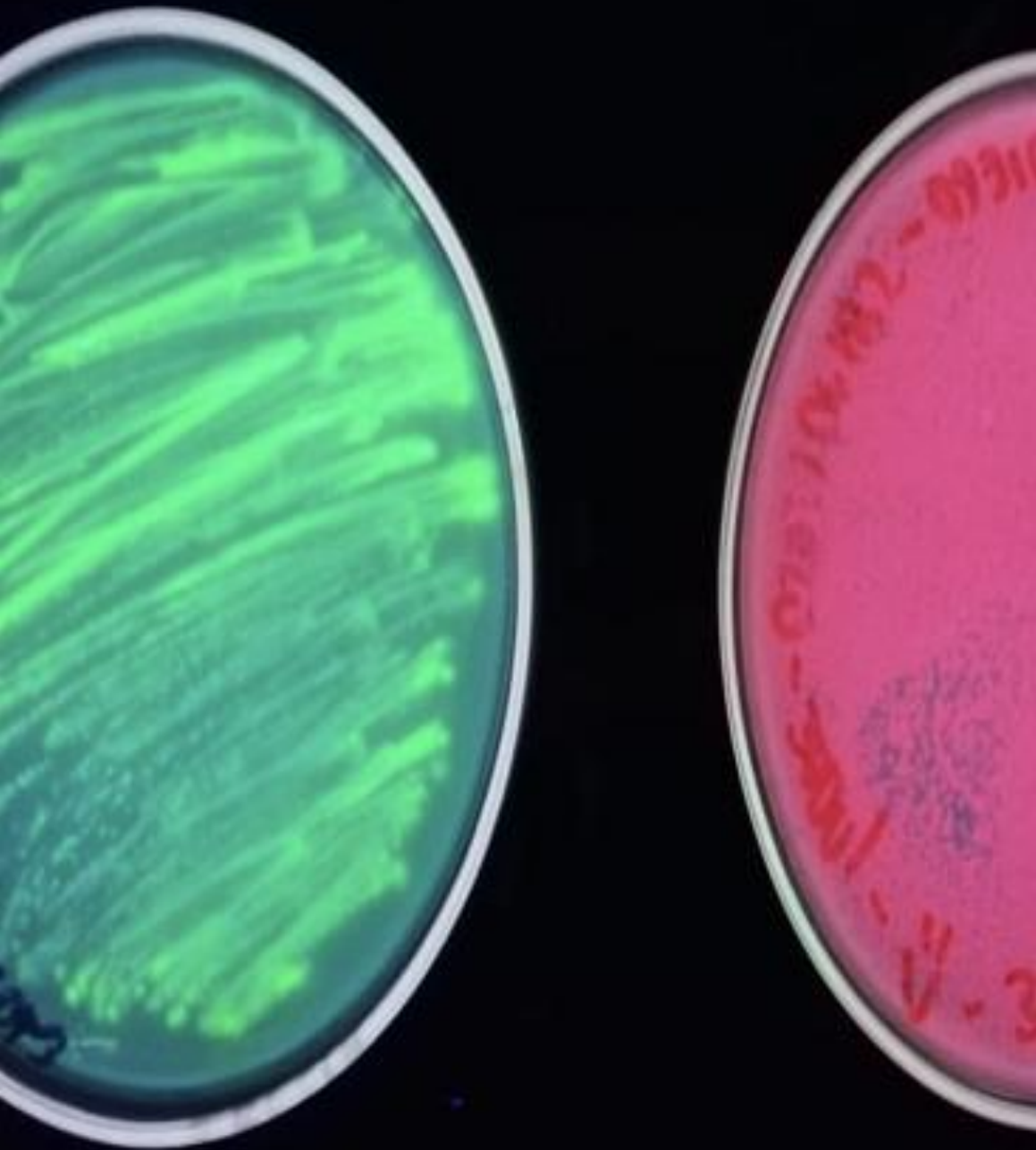
RENEW LABS STORE

RENEW LABS STORE

RENEW LABS STORE

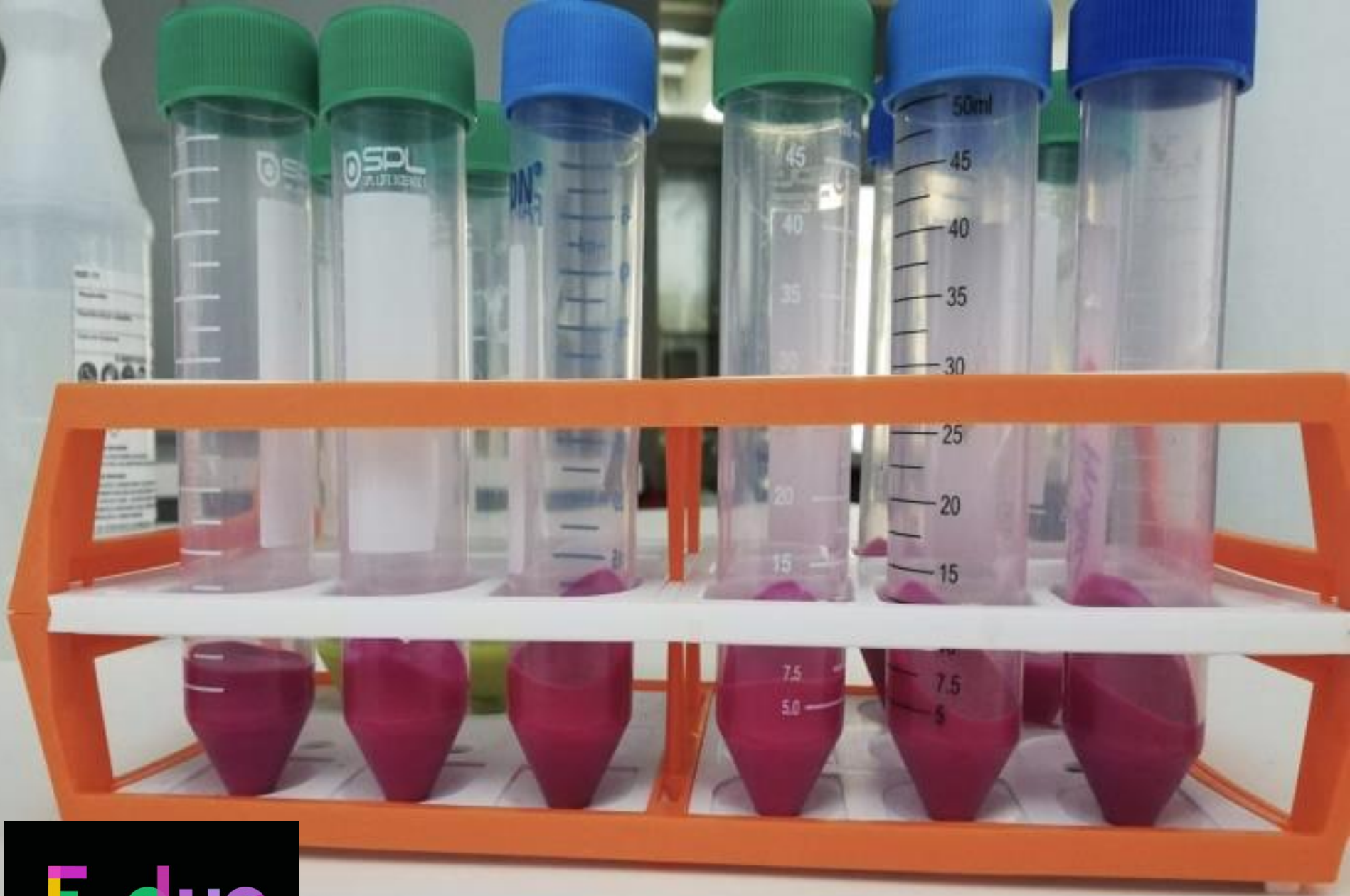


Source:
<https://www.instagram.com/p/CPZcR2blikk/>



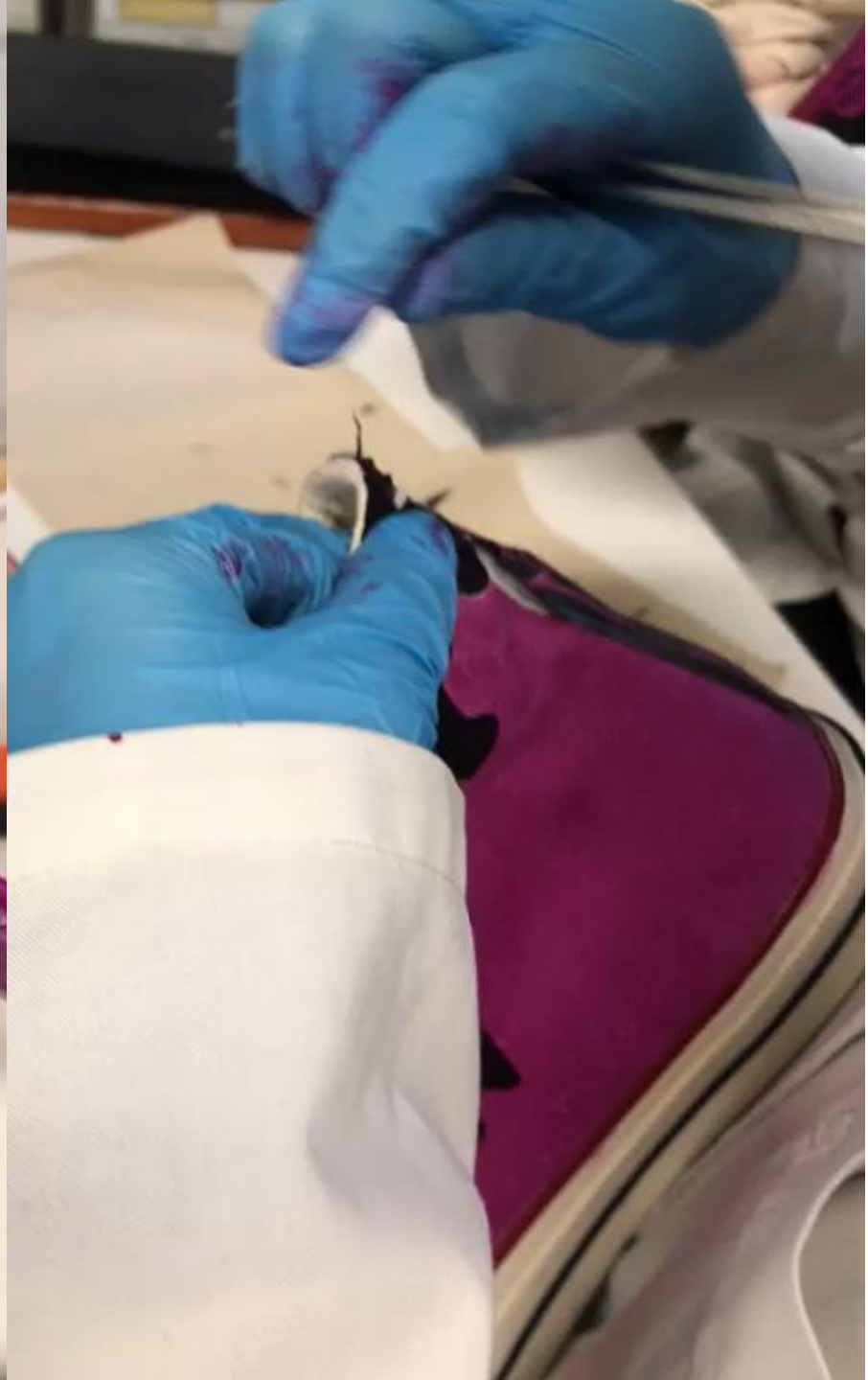
E. dye





E.dye







PAGE PATCH
10.10.10.1'88
OURS 24/7



E. dye

STEP 4 —
E. GROWN BACTERIA
CENTRIFUGED TO
OBTAIN LARGE AMOUNT OF
E. WHICH IS THEN APPLIED
TO THE TEXTILE.





Cambiando paradigmas co-creando con otros seres vivos

